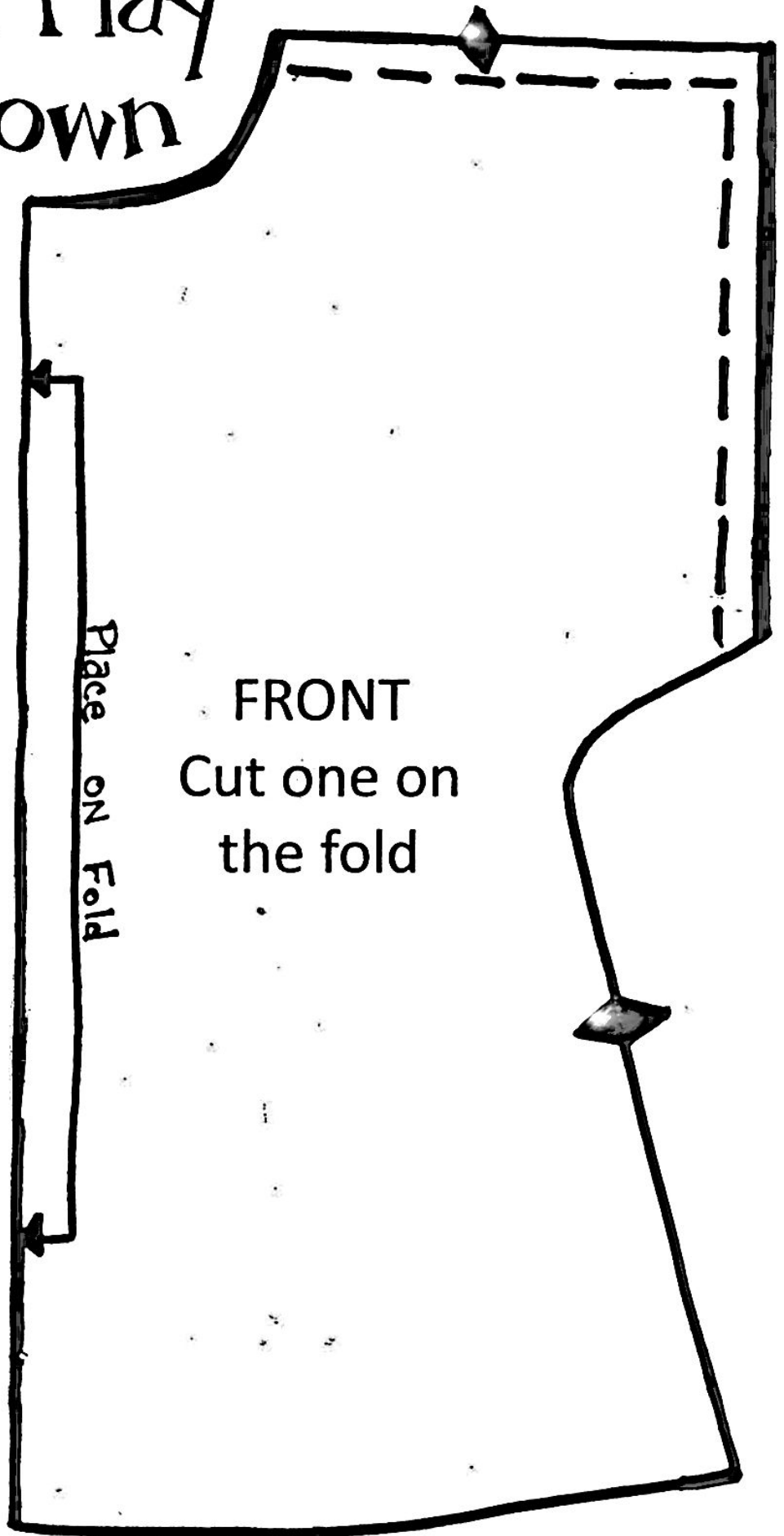


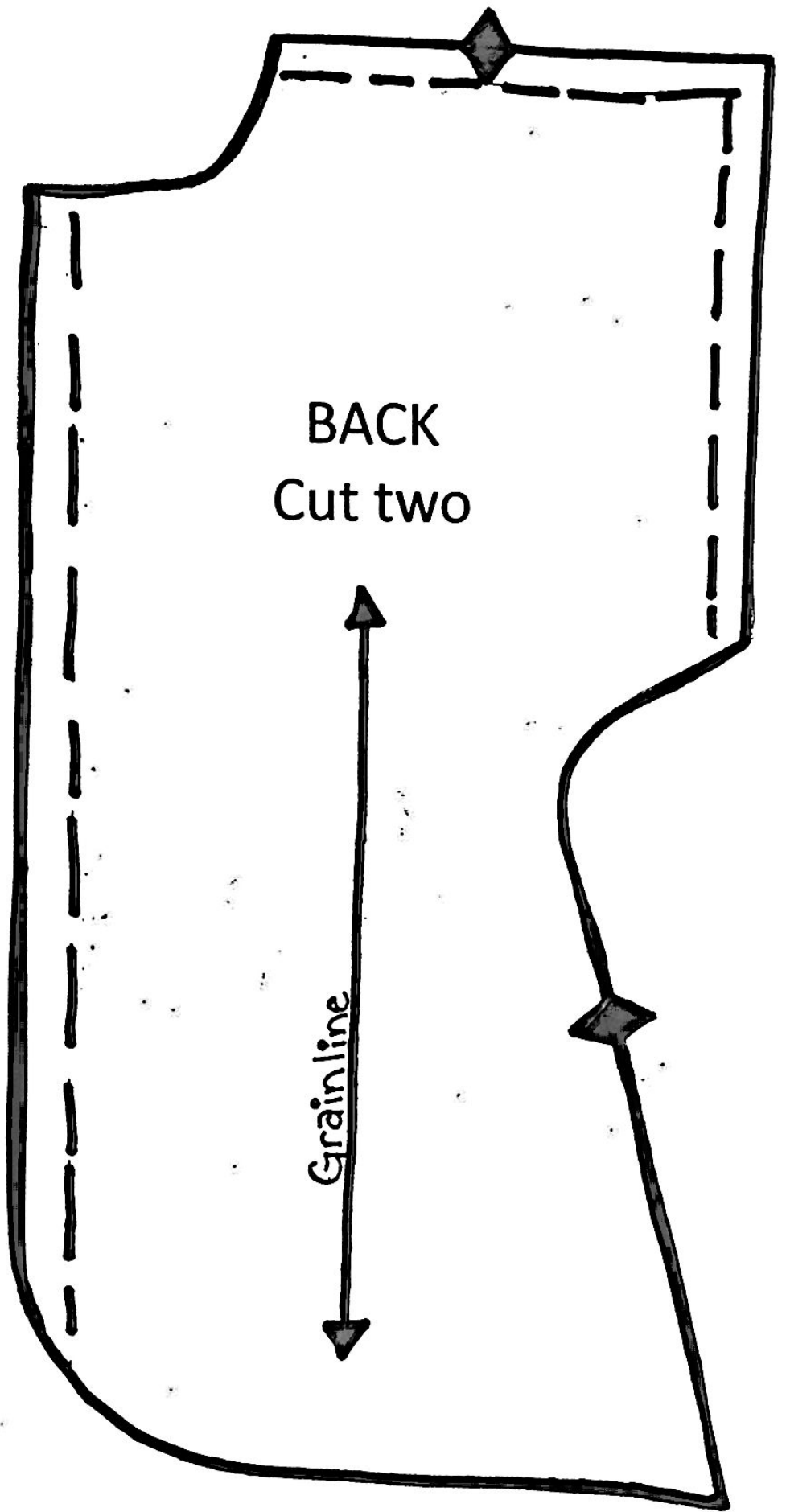
Medical Play Doll Gown

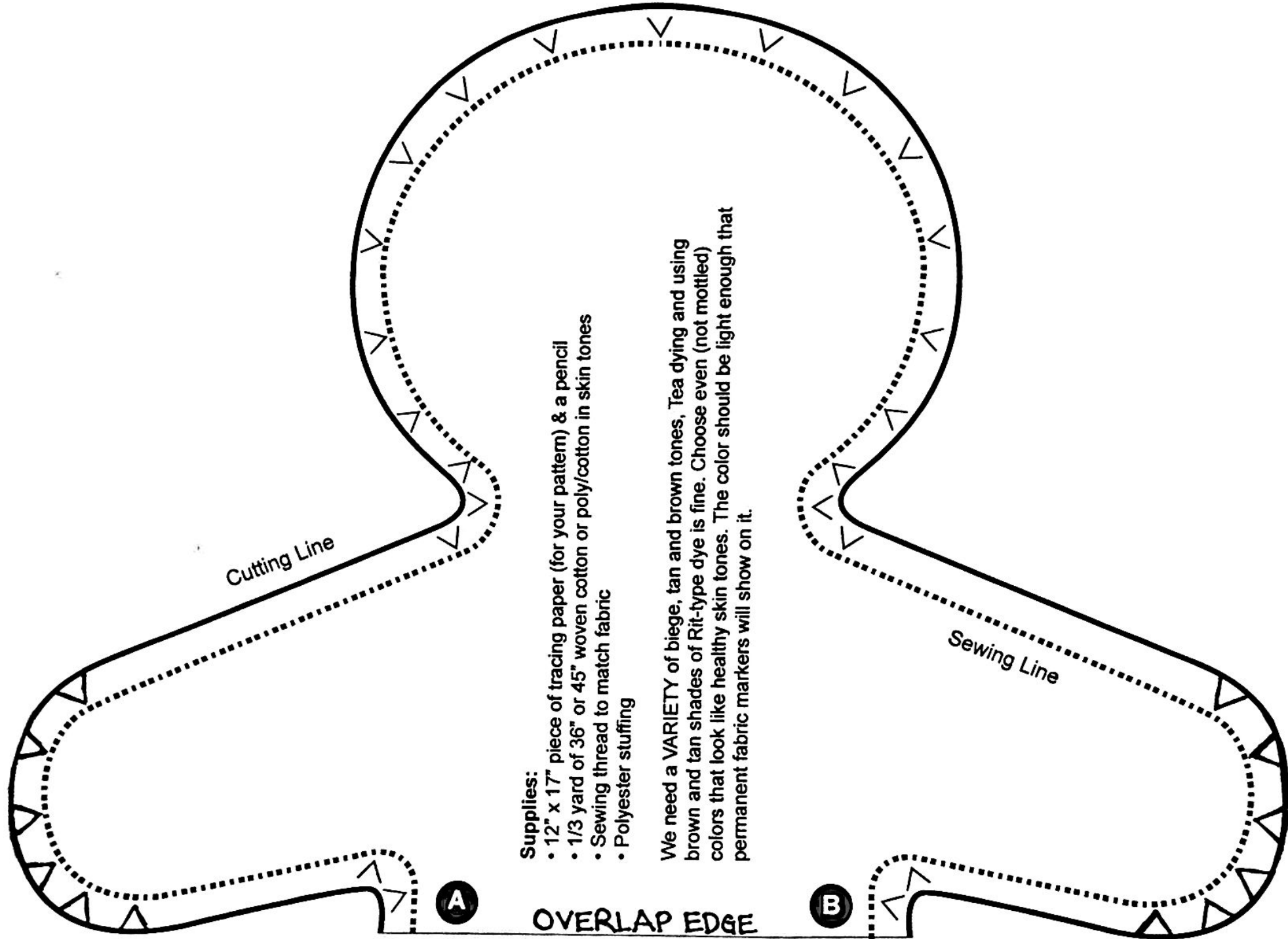
Instructions:

1. All seams should be 1/4 inches.
2. Sew sides and shoulder seams, connecting at the arrows.
3. Zig-zag stitch around the neck of the gown. If you have time, zig-zag around all parts.
4. Sew binding around neck.
5. Leave enough binding to tie at the back of the gown (5 - 7 inches for each side). If desired you can use snaps or Velcro instead of binding to fasten the back.
6. Hem bottom, back and arm holes; however, you will want to cut 1/4 inch off these areas before doing so to accommodate the added width of binding.



Medical Play Doll Gown - page 2





Cutting Line

Sewing Line

Supplies:

- 12" x 17" piece of tracing paper (for your pattern) & a pencil
- 1/3 yard of 36" or 45" woven cotton or poly/cotton in skin tones
- Sewing thread to match fabric
- Polyester stuffing

We need a VARIETY of beige, tan and brown tones, Tea dying and using brown and tan shades of Rit-type dye is fine. Choose even (not mottled) colors that look like healthy skin tones. The color should be light enough that permanent fabric markers will show on it.

A

B

OVERLAP EDGE

Cutting Line

OVERLAP FLAP

A

B

Directions

1. Trace Cutting line of pattern onto paper to make your pattern. Match **A** to **A** and **B** to **B** to make a one piece pattern of a body outline.
2. Cut out two doll bodies.
3. With correct sides together, using a 1/4" seam allowance and small stitches, sew around the body, leaving one side open as marked on the pattern.
4. Clip all curves. Turn.
5. Stuff firmly, but not so tightly that the doll's limbs cannot move. Hand stitch the opening closed.

Grain Line

Leave Open Here to Turn

Sewing Line

