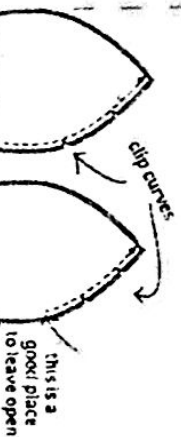
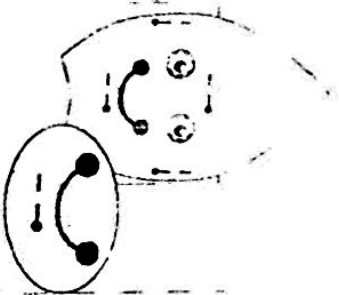


Octopus Instructions

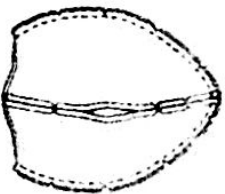
OCTOPUS A

Constructing The Octopus

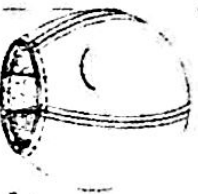
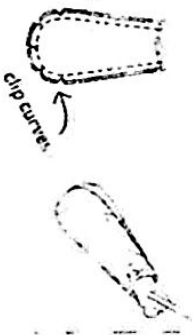
1. Follow the Applique instructions to prepare one octopus body piece for the octopus face. Before removing tear away material, stitch the mouth along the stitching lines with a satin stitch. Remove tear-away material.



2. Stitch octopus body piece to octopus face piece at side seam from bottom edge to top. Stitch remaining two body pieces together at a side seam from bottom edge to top, leaving an opening for turning. Place side pieces together and stitch remaining side seams together from bottom edges to top. Clip curves.



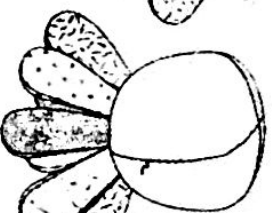
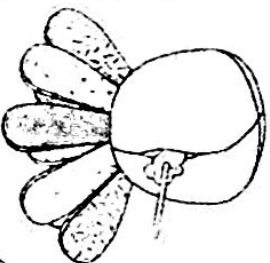
3. Place two leg pieces, right sides together, with raw edges even. Stitch outer edges. Clip curves. Turn leg right side out. Stuff leg with polyester fiberfill. Repeat for other legs.



place legs to right side of body

4. Pin legs to octopus body at placements, right sides together, alternating fabrics. Stitch across seam allowances to hold in place.

5. Pin octopus bottom to body (over legs), right sides together and raw edges even. Stitch.



6. Turn octopus right side out. Stuff body with polyester fiberfill. Stitch opening closed with small hand stitches.

*ellie
mae designs*

© 2013 The McCall Pattern Co.
All Rights Reserved Printed in U.S.A.

K 140

OCTOPUS

BODY A

FABRIC 1: CUT 4

1/4" (6MM)
SEAM ALLOWANCES
INCLUDED

1

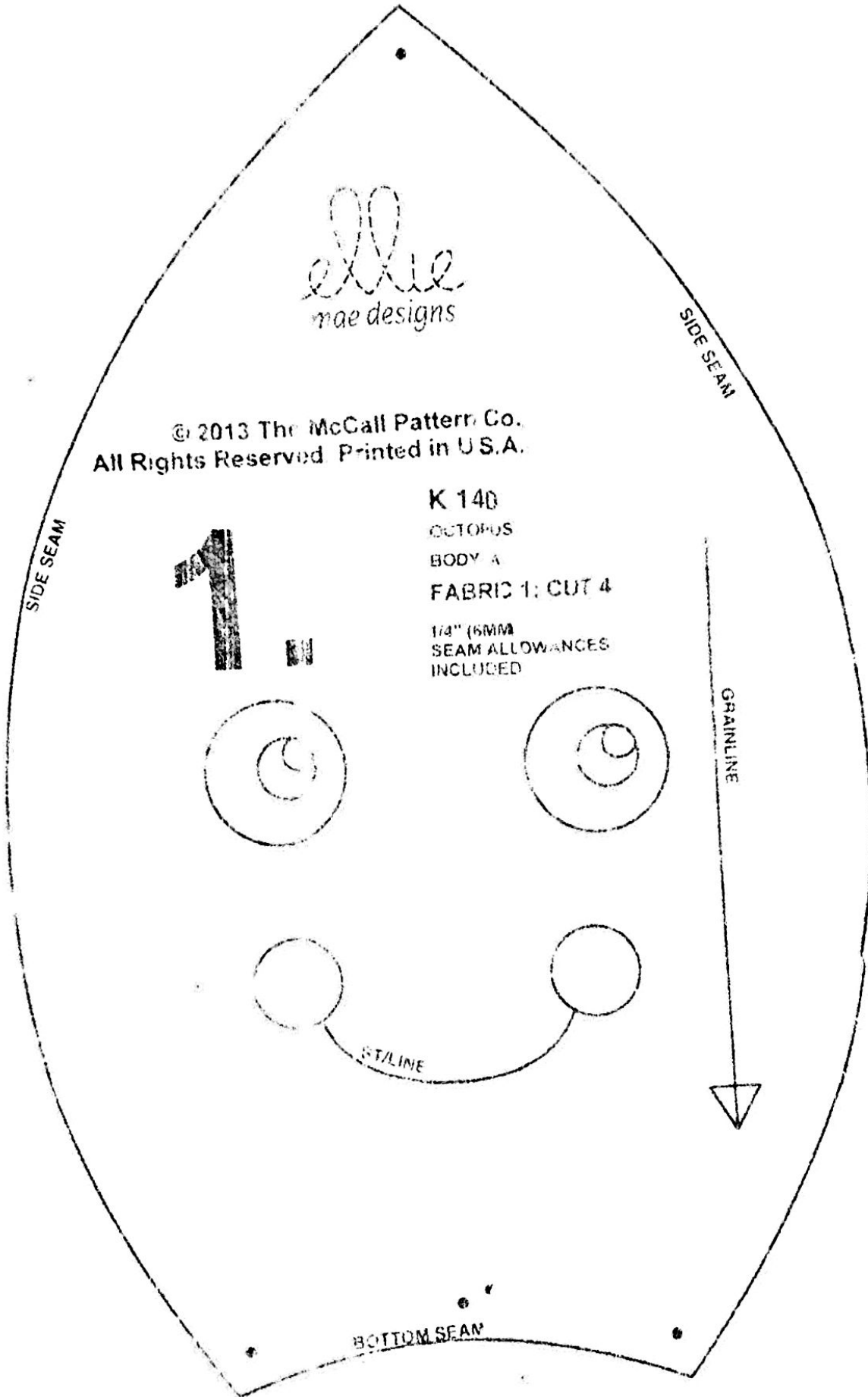
SIDE SEAM

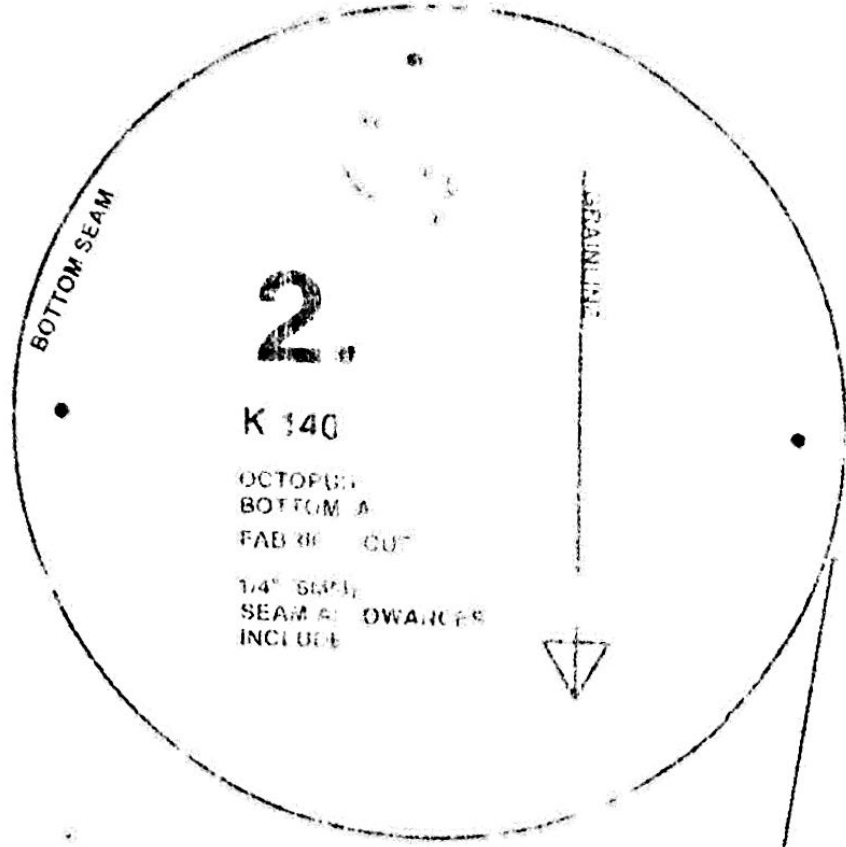
SIDE SEAM

GRAINLINE

ST/LINE

BOTTOM SEAM





BOTTOM SEAM

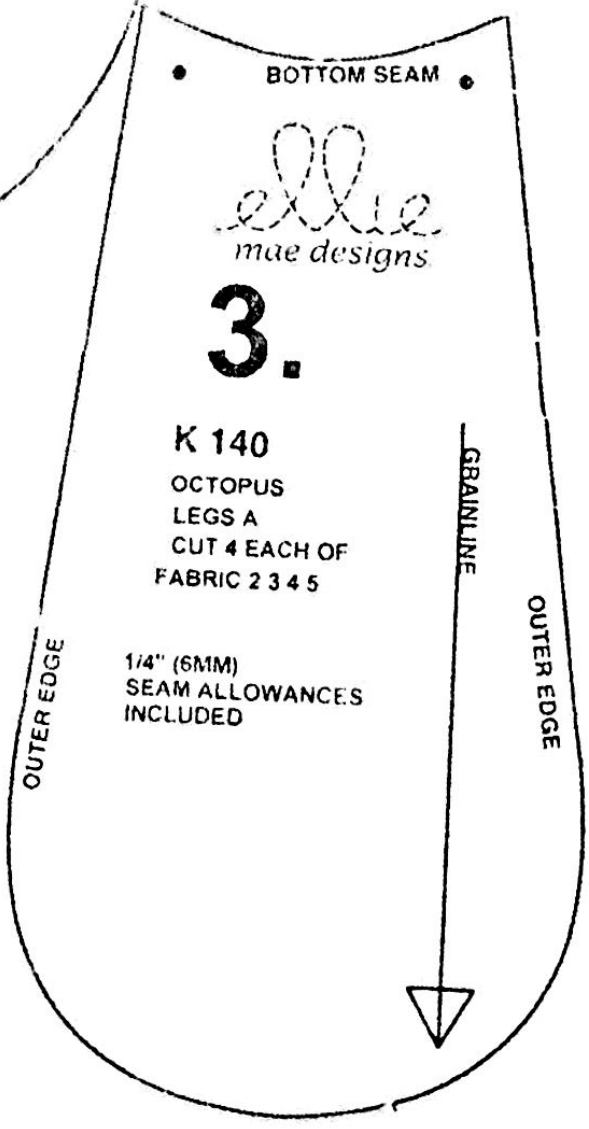
2.

K 140

OCTOPUS
BOTTOM A
FABRIC CUT

1/4" SEAM
SEAM ALLOWANCES
INCLUDED

GRAINLINE



BOTTOM SEAM

*ellie
mae designs*

3.

K 140

OCTOPUS
LEGS A
CUT 4 EACH OF
FABRIC 2 3 4 5

1/4" (6MM)
SEAM ALLOWANCES
INCLUDED

GRAINLINE

OUTER EDGE

OUTER EDGE

